



**ELECTRONIC COPY**

## DIAMOND REPORT

February 4, 2025	
IGI Report Number	678562917
Description	NATURAL DIAMOND
Shape and Cutting Style	ROUND BRILLIANT
Measurements	6.46 - 6.50 X 3.96 MM

## GRADING RESULTS

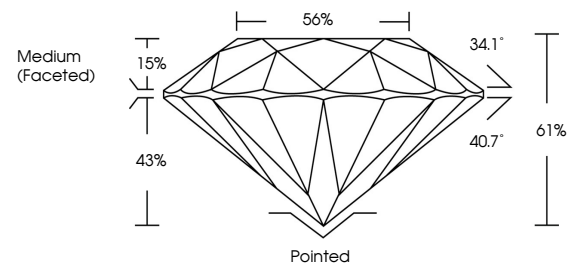
Carat Weight	1.00 CARAT
Color Grade	K
Clarity Grade	INTERNALLY FLAWLESS
Cut Grade	EXCELLENT

### ADDITIONAL GRADING INFORMATION

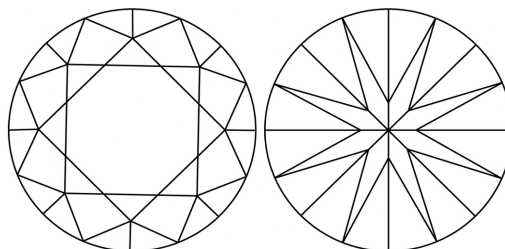
Polish	EXCELLENT
Symmetry	EXCELLENT
Fluorescence	VERY SLIGHT
Inscription(s)	 678562917
Comments: IDEAL CUT ROUND BRILLIANT	

678562917  
Report verification at [igi.org](http://igi.org)

## PROPORTIONS

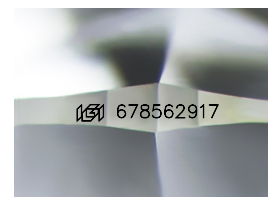


## CLARITY CHARACTERISTICS



### KEY TO SYMBOLS

Red symbols indicate internal characteristics.  
Green symbols indicate external characteristics.



Sample Image Used

**COLOR**

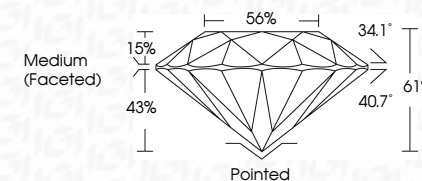
D - F	G - J	K - M	N - R	S - Z	FANCY
Colorless	Near Colorless	Slightly Tinted	Very Light Color	Light Color	

## CLARITY

IF	VVS <sup>1-2</sup>	VS <sup>1-2</sup>	SI <sup>1-2</sup>	I <sup>1-3</sup>
Internally Flawless	Very Very Slightly Included	Very Slightly Included	Slightly Included	Included



February 4, 2025	
IGI Report Number	678562917
Description	NATURAL DIAMOND
Shape and Cutting Style	ROUND BRILLIANT
Measurements	6.46 - 6.50 X 3.96 MM
<b>GRADING RESULTS</b>	
Carat Weight	1.00 CARAT
Color Grade	K
Clarity Grade	INTERNALLY FLAWLESS
Cut Grade	EXCELLENT



### ADDITIONAL GRADING INFORMATION

Polish	EXCELLENT
Symmetry	EXCELLENT
Fluorescence	VERY SLIGHT
Inscription(s)	<del>(G)</del> 678562917
Comments: IDEAL CUT ROUND BRILLIANT	



© IGI 2020, International Gemological Institute

FD - 10 20



THIS DOCUMENT WAS PRODUCED WITH THE FOLLOWING SECURITY MEASURES: SPECIAL DOCUMENT PAPER, INK SCREENS, WATERMARK, BACKGROUND DESIGNS, HOLOGRAM AND OTHER SECURITY FEATURES NOT LISTED AND DO EXCEED DOCUMENT SECURITY INDUSTRY GUIDELINES

**www.igi.org**

February 4, 2025  
IGI Report No 678562917  
RODIN BRILLIANT

6.46 - 6.50 X 5.95 MM	Carat Weight	1.00 CARAT
	Color Grade	K
	Clarity Grade	IF
	Cut Grade	EXCELLENT
	Depth	61%
	Table	56%
	Girdle	Medium (Faceted)
	Culet	Pointed
	Polish	EXCELLENT
	Symmetry	EXCELLENT
	Fluorescence	VERY SLIGHT
		Report #609207

**Comments:**  
IDEAL CUT ROUND BRILLIANT