



# INTERNATIONAL GEMOLOGICAL INSTITUTE

## DIAMOND REPORT

January 9, 2025  
IGI Report Number **670415302**  
Description **NATURAL DIAMOND**  
Shape and Cutting Style **ROUND BRILLIANT**  
Measurements **6.15 - 6.19 X 3.85 MM**

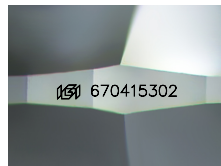
## GRADING RESULTS

Carat Weight **0.90 CARAT**  
Color Grade **H**  
Clarity Grade **I 1**  
Cut Grade **EXCELLENT**

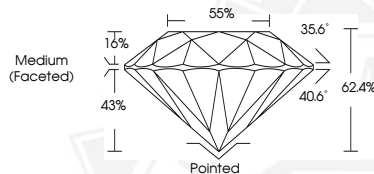
## ADDITIONAL GRADING INFORMATION

Polish **EXCELLENT**  
Symmetry **EXCELLENT**  
Fluorescence **SLIGHT**  
Identification Features **FEATHER, CRYSTAL CLOUD**  
Inscription(s) **IGI 670415302**  
Comments: IDEAL CUT ROUND BRILLIANT

ELECTRONIC COPY



Sample Image Used



January 9, 2025  
IGI Report Number **670415302**  
ROUND BRILLIANT  
NATURAL DIAMOND  
6.15 - 6.19 X 3.85 MM  
Carat Weight **0.90 CARAT**  
Color Grade **H**  
Clarity Grade **I 1**  
Cut Grade **EXCELLENT**  
Polish **EXCELLENT**  
Symmetry **EXCELLENT**  
Fluorescence **SLIGHT**  
Inscription(s) **IGI 670415302**  
Comments: IDEAL CUT ROUND BRILLIANT



January 9, 2025  
IGI Report Number **670415302**  
ROUND BRILLIANT  
NATURAL DIAMOND  
6.15 - 6.19 X 3.85 MM  
Carat Weight **0.90 CARAT**  
Color Grade **H**  
Clarity Grade **I 1**  
Cut Grade **EXCELLENT**  
Polish **EXCELLENT**  
Symmetry **EXCELLENT**  
Fluorescence **SLIGHT**  
Inscription(s) **IGI 670415302**  
Comments: IDEAL CUT ROUND BRILLIANT



THIS DOCUMENT WAS PRODUCED WITH THE FOLLOWING SECURITY MEASURES: SPECIAL DOCUMENT PAPER, INK SCREENS, WATERMARK, BACKGROUND DESIGN, HOLOGRAM AND OTHER SECURITY FEATURES NOT LISTED AND DO EXCEED DOCUMENT SECURITY INDUSTRY GUIDELINES.

For terms & conditions and to verify this report, please visit [www.igi.org](http://www.igi.org)