



ELECTRONIC COPY

DIAMOND REPORT

November 26, 2024	
IGI Report Number	665452933
Description	NATURAL DIAMOND
Shape and Cutting Style	ROUND BRILLIANT
Measurements	7.06 - 7.10 X 4.35 MM

GRADING RESULTS

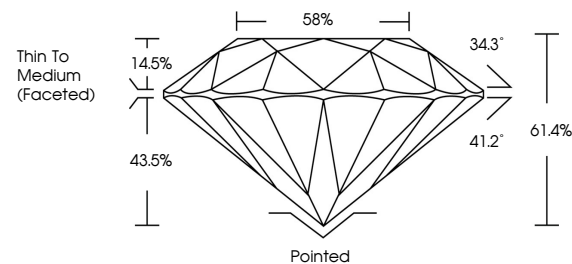
Carat Weight	1.32 CARAT
Color Grade	F
Clarity Grade	I 1
Cut Grade	EXCELLENT

ADDITIONAL GRADING INFORMATION

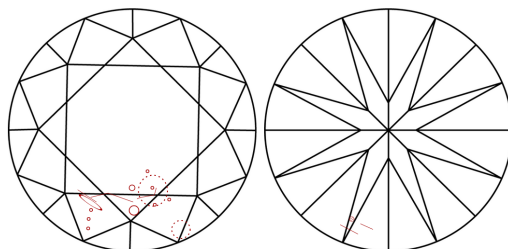
Polish	EXCELLENT
Symmetry	EXCELLENT
Fluorescence	NONE
Inscription(s)	 665452933
Comments: IDEAL CUT ROUND BRILLIANT	

665452933
Report verification at igi.org

PROPORTIONS

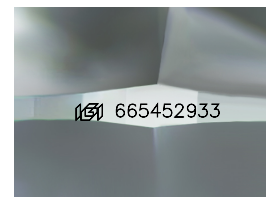


CLARITY CHARACTERISTICS



KEY TO SYMBOLS

Red symbols indicate internal characteristics.
Green symbols indicate external characteristics.



Sample Image Used

COLOR

D - F	G - J	K - M	N - R	S - Z	FANCY
Colorless	Near Colorless	Slightly Tinted	Very Light Color	Light Color	

CLARITY

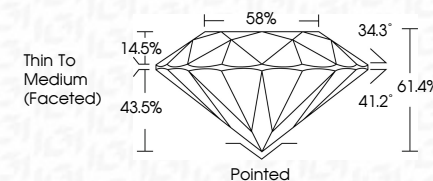
IF	VS ¹⁻²	VS ¹⁻²	SI ¹⁻²	I ¹⁻³
Internally Flawless	Very Very Slightly Included	Very Slightly Included	Slightly Included	Included



November 26, 2024	
IGI Report Number	665452933
Description	NATURAL DIAMOND
Shape and Cutting Style	ROUND BRILLIANT
Measurements	7.06 - 7.10 X 4.35 MM

GRADING RESULTS

Carat Weight	1.32 CARAT
Color Grade	F
Clarity Grade	I 1
Cut Grade	EXCELLENT



ADDITIONAL GRADING INFORMATION

Polish	EXCELLENT
Symmetry	EXCELLENT
Fluorescence	NONE
Inscription(s)	(G) 665452933
Comments: IDEAL CUT ROUND BRILLIANT	



IG



© IGI 2020, International Gemological Institute

FD - 10 20



THIS DOCUMENT WAS PRODUCED WITH THE FOLLOWING SECURITY MEASURES: SPECIAL DOCUMENT PAPER, INK SCREENS, WATERMARK, BACKGROUND DESIGNS, HOLOGRAM AND OTHER SECURITY FEATURES NOT LISTED AND DO EXCEED DOCUMENT SECURITY INDUSTRY GUIDELINE

www.igi.org

November 26, 2024
GI Report No 665452933
ROUND BRILLIANT

ROUND BRILLIANT	1.06 - 1.10 X 4.35 MM	1.32 CARAT	11	EXCELLENT	61.4%	58%	Thin To Medium (faceted)	Pointed	EXCELLENT	EXCELLENT	NONE	459 1.65 400203
		Carat Weight	Color Grade	Clarity Grade	Cut Grade	Depth	Table	Girdle	Culet	Polish	Symmetry	Fluorescence

Comments:
REAL CUT POLING BRILLIANT