



623451892

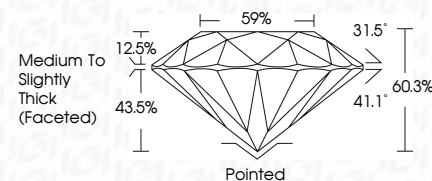
DIAMOND REPORT **ELECTRONIC COPY**



March 7, 2024
IGI Report Number 623451892
Description NATURAL DIAMOND
Shape and Cutting Style ROUND BRILLIANT
Measurements 6.58 - 6.61 x 3.98 mm

GRADING RESULTS

Carat Weight 1.06 CARAT
Color Grade K
Clarity Grade SI 1
Cut Grade EXCELLENT



March 7, 2024
IGI Report Number 623451892
Description NATURAL DIAMOND
Shape and Cutting Style ROUND BRILLIANT
Measurements 6.58 - 6.61 x 3.98 mm

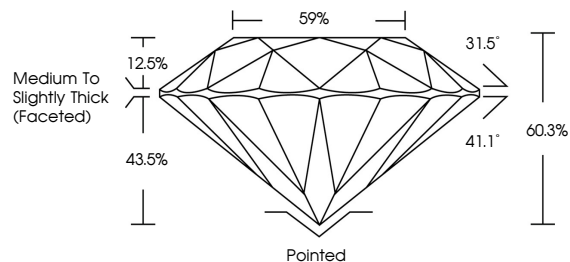
GRADING RESULTS

Carat Weight 1.06 CARAT
Color Grade K
Clarity Grade SI 1
Cut Grade EXCELLENT

ADDITIONAL GRADING INFORMATION

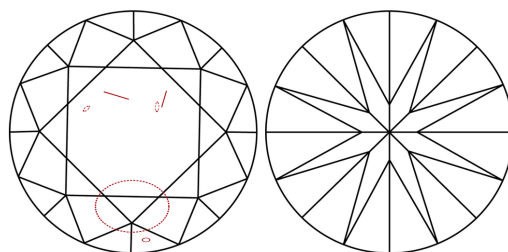
Polish VERY GOOD
Symmetry EXCELLENT
Fluorescence SLIGHT
Inscription(s) IGI 623451892

PROPORTIONS



Sample Image Used

CLARITY CHARACTERISTICS



KEY TO SYMBOLS

Red symbols indicate internal characteristics.
Green symbols indicate external characteristics.

COLOR

D - F	G - J	K - M	N - R	S - Z	FANCY
Colorless	Near Colorless	Slightly Tinted	Very Light Color	Light Color	

CLARITY

IF	VS ¹⁻²	VS ¹⁻²	SI ¹⁻²	I ¹⁻³
Internally Flawless	Very Very Slightly Included	Very Slightly Included	Slightly Included	Included

ADDITIONAL GRADING INFORMATION

Polish VERY GOOD
Symmetry EXCELLENT
Fluorescence SLIGHT
Inscription(s) IGI 623451892



IGI



March 7, 2024
IGI Report No 623451892
NATURAL DIAMOND
ROUND BRILLIANT
6.58 - 6.61 x 3.98 mm
Carat Weight 1.06 CARAT
Color Grade K
Clarity Grade SI 1
Cut Grade EXCELLENT
Depth 60.3%
Table 59%
Grade Medium To Slightly Thick (Faceted)
Culet Pointed
Polish VERY GOOD
Symmetry EXCELLENT
Fluorescence SLIGHT
Inscription(s) IGI 623451892