



**INTERNATIONAL  
GEMOLOGICAL  
INSTITUTE**

**DIAMOND REPORT**

**ELECTRONIC COPY**

619460309



March 4, 2024  
IGI Report Number 619460309  
NATURAL DIAMOND  
ROUND BRILLIANT  
4.69 - 4.73 x 2.95 mm  
Carat Weight 0.40 CARAT  
Color Grade K  
Clarity Grade SI 1  
Cut Grade EXCELLENT  
Polish EXCELLENT  
Symmetry EXCELLENT  
Fluorescence NONE  
Inscription(s) IGI 619460309

March 4, 2024

IGI Report Number

619460309

Description

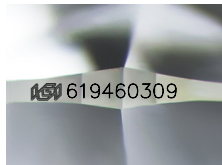
NATURAL DIAMOND

Shape and Cutting Style

ROUND BRILLIANT

Measurements

4.69 - 4.73 x 2.95 mm



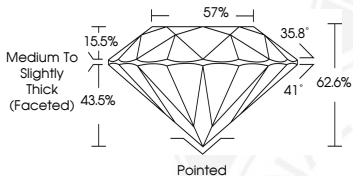
Sample Image Used

**GRADING RESULTS**

Carat Weight 0.40 CARAT  
Color Grade K  
Clarity Grade SI 1  
Cut Grade EXCELLENT

**ADDITIONAL GRADING INFORMATION**

Polish EXCELLENT  
Symmetry EXCELLENT  
Fluorescence NONE  
Identification Features CLOUD, CRYSTAL, FEATHER  
Inscription(s) IGI 619460309



**COLOR**

D - F	G - J	K - M	N - R	S - Z	FANCY
Colorless	Near Colorless	Slightly Tinted	Very Light Color	Light Color	

**CLARITY**

IF	VS <sup>1-2</sup>	VS <sup>1-2</sup>	SI <sup>1-2</sup>	I <sup>1-2</sup>
Internally Flawless	Very Very Slightly Included	Very Slightly Included	Slightly Included	Included

© IGI 2020, International Gemological Institute

FD - 10 20



March 4, 2024  
IGI Report Number 619460309  
NATURAL DIAMOND  
ROUND BRILLIANT  
4.69 - 4.73 x 2.95 mm  
Carat Weight 0.40 CARAT  
Color Grade K  
Clarity Grade SI 1  
Cut Grade EXCELLENT  
Polish EXCELLENT  
Symmetry EXCELLENT  
Fluorescence NONE  
Inscription(s) IGI 619460309

THIS DOCUMENT WAS PRODUCED WITH THE FOLLOWING SECURITY MEASURES: SPECIAL DOCUMENT PAPER, INK SCREENS, WATERMARK BACKGROUND DESIGNS, HOLOGRAM AND OTHER SECURITY FEATURES NOT LISTED AND DO EXCEED DOCUMENT SECURITY INDUSTRY GUIDELINES.