



**INTERNATIONAL
GEMOLOGICAL
INSTITUTE**

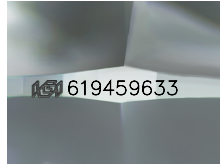
619459633



February 29, 2024
IGI Report Number 619459633
NATURAL DIAMOND
ROUND BRILLIANT
4.66 - 4.71 x 2.96 mm
Carat Weight 0.40 CARAT
Color Grade J
Clarity Grade VS 1
Cut Grade EXCELLENT
Polish VERY GOOD
Symmetry EXCELLENT
Fluorescence NONE
Inscription(s) IGI 619459633

DIAMOND REPORT

ELECTRONIC COPY



Sample Image Used

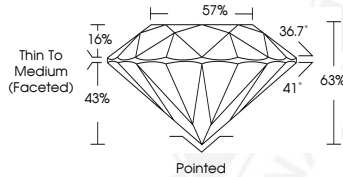
February 29, 2024
IGI Report Number 619459633
Description NATURAL DIAMOND
Shape and Cutting Style ROUND BRILLIANT
Measurements 4.66 - 4.71 x 2.96 mm

GRADING RESULTS

Carat Weight 0.40 CARAT
Color Grade J
Clarity Grade VS 1
Cut Grade EXCELLENT

ADDITIONAL GRADING INFORMATION

Polish VERY GOOD
Symmetry EXCELLENT
Fluorescence NONE
Identification Features CLOUD, CAVITY
Inscription(s) IGI 619459633



COLOR

D - F	G - J	K - M	N - R	S - Z	FANCY
Colorless	Near Colorless	Slightly Tinted	Very Light Color	Light Color	

CLARITY

IF	VS ¹⁻²	VS ¹⁻²	SI ¹⁻²	I ¹⁻²
Internally Flawless	Very Very Slightly Included	Very Slightly Included	Slightly Included	Included

© IGI 2020, International Gemological Institute

FD - 10 20



THIS DOCUMENT WAS PRODUCED WITH THE FOLLOWING SECURITY MEASURES: SPECIAL DOCUMENT PAPER, INK SCREENS, WATERMARK BACKGROUND DESIGNS, HOLOGRAM AND OTHER SECURITY FEATURES NOT LISTED AND DO EXCEED DOCUMENT SECURITY INDUSTRY GUIDELINES.



February 29, 2024
IGI Report Number 619459633
NATURAL DIAMOND
ROUND BRILLIANT
4.66 - 4.71 x 2.96 mm
Carat Weight 0.40 CARAT
Color Grade J
Clarity Grade VS 1
Cut Grade EXCELLENT
Polish VERY GOOD
Symmetry EXCELLENT
Fluorescence NONE
Inscription(s) IGI 619459633