



**INTERNATIONAL  
GEMOLOGICAL  
INSTITUTE**

619459610

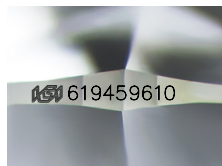


March 4, 2024  
IGI Report Number 619459610  
NATURAL DIAMOND  
ROUND BRILLIANT  
5.63 - 5.67 x 3.56 mm  
Carat Weight 0.70 CARAT  
Color Grade I  
Clarity Grade VS 1  
Cut Grade EXCELLENT  
Polish EXCELLENT  
Symmetry EXCELLENT  
Fluorescence SLIGHT  
Inscription(s) IGI 619459610

**DIAMOND REPORT**

**ELECTRONIC COPY**

March 4, 2024  
IGI Report Number 619459610  
Description NATURAL DIAMOND  
Shape and Cutting Style ROUND BRILLIANT  
Measurements 5.63 - 5.67 x 3.56 mm



Sample Image Used

**GRADING RESULTS**

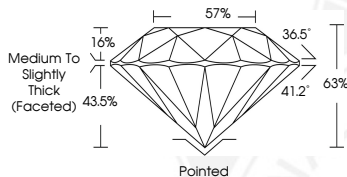
Carat Weight 0.70 CARAT  
Color Grade I  
Clarity Grade VS 1  
Cut Grade EXCELLENT

**ADDITIONAL GRADING INFORMATION**

Polish EXCELLENT  
Symmetry EXCELLENT  
Fluorescence SLIGHT

Identification Features FEATHER, CRYSTAL, CLOUD, INDENTED NATURAL

Inscription(s) IGI 619459610



**COLOR**

D - F	G - J	K - M	N - R	S - Z	FANCY
Colorless	Near Colorless	Slightly Tinted	Very Light Color	Light Color	

**CLARITY**

IF	VS <sup>1-2</sup>	VS <sup>1-2</sup>	SI <sup>1-2</sup>	I <sup>1-2</sup>
Internally Flawless	Very Very Slightly Included	Very Slightly Included	Slightly Included	Included

© IGI 2020, International Gemological Institute

FD - 10 20



March 4, 2024  
IGI Report Number 619459610  
NATURAL DIAMOND  
ROUND BRILLIANT  
5.63 - 5.67 x 3.56 mm  
Carat Weight 0.70 CARAT  
Color Grade I  
Clarity Grade VS 1  
Cut Grade EXCELLENT  
Polish EXCELLENT  
Symmetry EXCELLENT  
Fluorescence SLIGHT  
Inscription(s) IGI 619459610

THIS DOCUMENT WAS PRODUCED WITH THE FOLLOWING SECURITY MEASURES: SPECIAL DOCUMENT PAPER, INK SCREENS, WATERMARK BACKGROUND DESIGNS, HOLOGRAM AND OTHER SECURITY FEATURES NOT LISTED AND DO EXCEED DOCUMENT SECURITY INDUSTRY GUIDELINES.