



**INTERNATIONAL
GEMOLOGICAL
INSTITUTE**

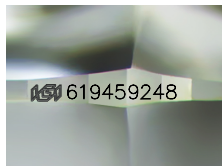
619459248



February 26, 2024
IGI Report Number 619459248
NATURAL DIAMOND
ROUND BRILLIANT
5.65 - 5.70 x 3.48 mm
Carat Weight 0.70 CARAT
Color Grade K
Clarity Grade VVS 1
Cut Grade EXCELLENT
Polish EXCELLENT
Symmetry EXCELLENT
Fluorescence SLIGHT
Inscription(s) IGI 619459248
Comments: IDEAL CUT ROUND
BRILLIANT

DIAMOND REPORT

ELECTRONIC COPY



Sample Image Used

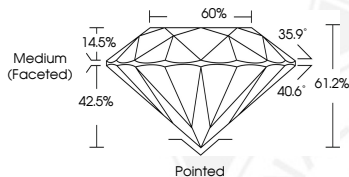
February 26, 2024
IGI Report Number 619459248
Description NATURAL DIAMOND
Shape and Cutting Style ROUND BRILLIANT
Measurements 5.65 - 5.70 x 3.48 mm

GRADING RESULTS

Carat Weight 0.70 CARAT
Color Grade K
Clarity Grade VVS 1
Cut Grade EXCELLENT

ADDITIONAL GRADING INFORMATION

Polish EXCELLENT
Symmetry EXCELLENT
Fluorescence SLIGHT
Identification Features PINPOINT
Inscription(s) IGI 619459248
Comments: IDEAL CUT ROUND BRILLIANT



COLOR

D - F	G - J	K - M	N - R	S - Z	FANCY
Colorless	Near Colorless	Slightly Tinted	Very Light Color	Light Color	

CLARITY

IF	VS ¹⁻²	VS ¹⁻²	SI ¹⁻²	I ¹⁻²
Internally Flawless	Very Very Slightly Included	Very Slightly Included	Slightly Included	Included

© IGI 2020, International Gemological Institute

FD - 10 20



February 26, 2024
IGI Report Number 619459248
NATURAL DIAMOND
ROUND BRILLIANT
5.65 - 5.70 x 3.48 mm
Carat Weight 0.70 CARAT
Color Grade K
Clarity Grade VVS 1
Cut Grade EXCELLENT
Polish EXCELLENT
Symmetry EXCELLENT
Fluorescence SLIGHT
Inscription(s) IGI 619459248
Comments: IDEAL CUT ROUND
BRILLIANT

THIS DOCUMENT WAS PRODUCED WITH THE FOLLOWING SECURITY MEASURES: SPECIAL DOCUMENT PAPER, INK SCREENS, WATERMARK BACKGROUND DESIGNS, HOLOGRAM AND OTHER SECURITY FEATURES NOT LISTED AND DO EXCEED DOCUMENT SECURITY INDUSTRY GUIDELINES.