



**INTERNATIONAL
GEMOLOGICAL
INSTITUTE**

DIAMOND REPORT

ELECTRONIC COPY

February 19, 2024

IGI Report Number

619459064

Description

NATURAL DIAMOND

Shape and Cutting Style

ROUND BRILLIANT

Measurements

5.65 - 5.70 x 3.54 mm

GRADING RESULTS

Carat Weight

0.70 CARAT

Color Grade

K

Clarity Grade

INTERNALLY FLAWLESS

Cut Grade

EXCELLENT

ADDITIONAL GRADING INFORMATION

Polish

EXCELLENT

Symmetry

EXCELLENT

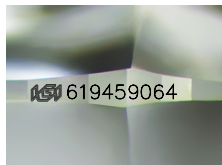
Fluorescence

NONE

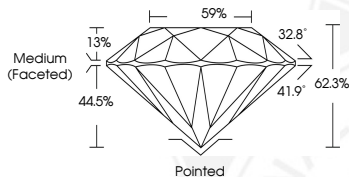
Inscription(s)

IGI 619459064

619459064



Sample Image Used



COLOR

D - F G - J K - M N - R S - Z FANCY

Colorless Near Colorless Slightly Tinted Very Light Color Light Color

CLARITY

IF VS¹⁻² VS¹⁻² SI¹⁻² I¹⁻²

Internally Flawless Very Very Slightly Included Very Slightly Included Slightly Included Included

© IGI 2020, International Gemological Institute

FD - 10 20



February 19, 2024

IGI Report Number 619459064

NATURAL DIAMOND

ROUND BRILLIANT

5.65 - 5.70 x 3.54 mm

Carat Weight 0.70 CARAT

Color Grade K

Clarity Grade INTERNALLY FLAWLESS

Cut Grade EXCELLENT

Polish EXCELLENT

Symmetry EXCELLENT

Fluorescence NONE

Inscription(s) IGI 619459064



February 19, 2024

IGI Report Number 619459064

NATURAL DIAMOND

ROUND BRILLIANT

5.65 - 5.70 x 3.54 mm

Carat Weight 0.70 CARAT

Color Grade K

Clarity Grade INTERNALLY FLAWLESS

Cut Grade EXCELLENT

Polish EXCELLENT

Symmetry EXCELLENT

Fluorescence NONE

Inscription(s) IGI 619459064



THIS DOCUMENT WAS PRODUCED WITH THE FOLLOWING SECURITY MEASURES: SPECIAL DOCUMENT PAPER, INK SCREENS, WATERMARK BACKGROUND DESIGNS, HOLOGRAM AND OTHER SECURITY FEATURES NOT LISTED AND DO EXCEED DOCUMENT SECURITY INDUSTRY GUIDELINES.