



**INTERNATIONAL
GEMOLOGICAL
INSTITUTE**

619459059

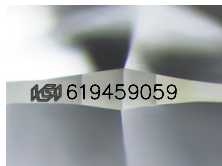


February 19, 2024
IGI Report Number 619459059
NATURAL DIAMOND
ROUND BRILLIANT
5.64 - 5.69 x 3.57 mm
Carat Weight 0.70 CARAT
Color Grade E
Clarity Grade SI 2
Cut Grade EXCELLENT
Polish EXCELLENT
Symmetry EXCELLENT
Fluorescence NONE
Inscription(s) IGI 619459059

DIAMOND REPORT

ELECTRONIC COPY

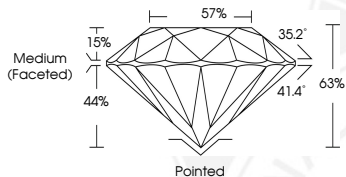
February 19, 2024
IGI Report Number 619459059
Description NATURAL DIAMOND
Shape and Cutting Style ROUND BRILLIANT
Measurements 5.64 - 5.69 x 3.57 mm



Sample Image Used

GRADING RESULTS

Carat Weight 0.70 CARAT
Color Grade E
Clarity Grade SI 2
Cut Grade EXCELLENT



ADDITIONAL GRADING INFORMATION

Polish EXCELLENT
Symmetry EXCELLENT
Fluorescence NONE
Identification Features CRYSTAL, FEATHER, CLOUD, CAVITY
Inscription(s) IGI 619459059

COLOR

D - F	G - J	K - M	N - R	S - Z	FANCY
Colorless	Near Colorless	Slightly Tinted	Very Light Color	Light Color	

CLARITY

IF	VS ¹⁻²	VS ¹⁻²	SI ¹⁻²	I ¹⁻²
Internally Flawless	Very Very Slightly Included	Very Slightly Included	Slightly Included	Included

© IGI 2020, International Gemological Institute

FD - 10 20



February 19, 2024
IGI Report Number 619459059
NATURAL DIAMOND
ROUND BRILLIANT
5.64 - 5.69 x 3.57 mm
Carat Weight 0.70 CARAT
Color Grade E
Clarity Grade SI 2
Cut Grade EXCELLENT
Polish EXCELLENT
Symmetry EXCELLENT
Fluorescence NONE
Inscription(s) IGI 619459059

THIS DOCUMENT WAS PRODUCED WITH THE FOLLOWING SECURITY MEASURES: SPECIAL DOCUMENT PAPER, INK SCREENS, WATERMARK BACKGROUND DESIGNS, HOLOGRAM AND OTHER SECURITY FEATURES NOT LISTED AND DO EXCEED DOCUMENT SECURITY INDUSTRY GUIDELINES.