



**INTERNATIONAL  
GEMOLOGICAL  
INSTITUTE**

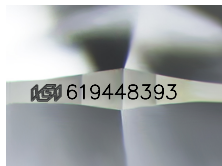
619448393



February 7, 2024  
IGI Report Number 619448393  
NATURAL DIAMOND  
ROUND BRILLIANT  
6.10 - 6.15 x 3.87 mm  
Carat Weight 0.90 CARAT  
Color Grade I  
Clarity Grade VVS 1  
Cut Grade EXCELLENT  
Polish EXCELLENT  
Symmetry EXCELLENT  
Fluorescence NONE  
Inscription(s) IGI 619448393

**DIAMOND REPORT**

**ELECTRONIC COPY**



Sample Image Used

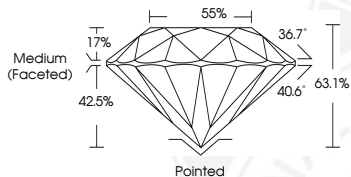
February 7, 2024  
IGI Report Number 619448393  
Description NATURAL DIAMOND  
Shape and Cutting Style ROUND BRILLIANT  
Measurements 6.10 - 6.15 x 3.87 mm

**GRADING RESULTS**

Carat Weight 0.90 CARAT  
Color Grade I  
Clarity Grade VVS 1  
Cut Grade EXCELLENT

**ADDITIONAL GRADING INFORMATION**

Polish EXCELLENT  
Symmetry EXCELLENT  
Fluorescence NONE  
Identification Features PINPOINT  
Inscription(s) IGI 619448393



**COLOR**

D - F	G - J	K - M	N - R	S - Z	FANCY
Colorless	Near Colorless	Slightly Tinted	Very Light Color	Light Color	

**CLARITY**

IF	VS <sup>1-2</sup>	VS <sup>1-2</sup>	SI <sup>1-2</sup>	I <sup>1-2</sup>
Internally Flawless	Very Very Slightly Included	Very Slightly Included	Slightly Included	Included

© IGI 2020, International Gemological Institute

FD - 10 20



February 7, 2024  
IGI Report Number 619448393  
NATURAL DIAMOND  
ROUND BRILLIANT  
6.10 - 6.15 x 3.87 mm  
Carat Weight 0.90 CARAT  
Color Grade I  
Clarity Grade VVS 1  
Cut Grade EXCELLENT  
Polish EXCELLENT  
Symmetry EXCELLENT  
Fluorescence NONE  
Inscription(s) IGI 619448393