



617463821

DIAMOND REPORT

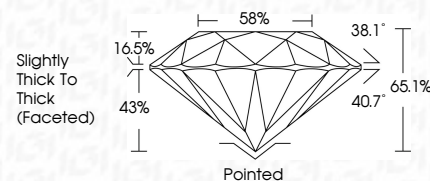
ELECTRONIC COPY



February 3, 2024
IGI Report Number 617463821
Description NATURAL DIAMOND
Shape and Cutting Style ROUND BRILLIANT
Measurements 6.15 - 6.25 x 4.05 mm

GRADING RESULTS

Carat Weight 1.00 CARAT
Color Grade I
Clarity Grade VVS 1
Cut Grade VERY GOOD



February 3, 2024
IGI Report Number 617463821
Description NATURAL DIAMOND
Shape and Cutting Style ROUND BRILLIANT
Measurements 6.15 - 6.25 x 4.05 mm

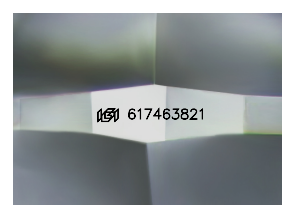
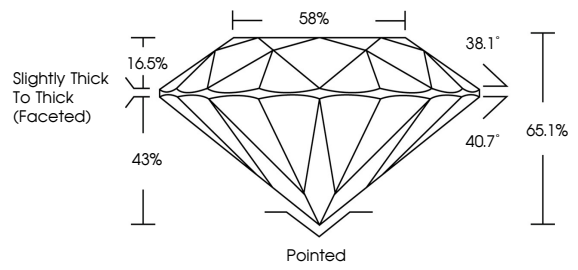
GRADING RESULTS

Carat Weight 1.00 CARAT
Color Grade I
Clarity Grade VVS 1
Cut Grade VERY GOOD

ADDITIONAL GRADING INFORMATION

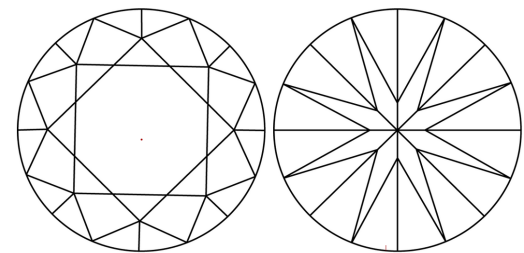
Polish EXCELLENT
Symmetry VERY GOOD
Fluorescence NONE
Inscription(s) IGI 617463821

PROPORTIONS



Sample Image Used

CLARITY CHARACTERISTICS



KEY TO SYMBOLS

Red symbols indicate internal characteristics.
Green symbols indicate external characteristics.

COLOR

Table with columns: D - F, G - J, K - M, N - R, S - Z, FANCY. Row: Colorless, Near Colorless, Slightly Tinted, Very Light Color, Light Color

CLARITY

Table with columns: IF, VS 1-2, VS 1-2, SI 1-2, I 1-3. Row: Internally Flawless, Very Very Slightly Included, Very Slightly Included, Slightly Included, Included

ADDITIONAL GRADING INFORMATION

Polish EXCELLENT
Symmetry VERY GOOD
Fluorescence NONE
Inscription(s) IGI 617463821



IGI



February 3, 2024
IGI Report No 617463821
NATURAL DIAMOND
ROUND BRILLIANT
6.15 - 6.25 x 4.05 mm
Carat Weight 1.00 CARAT
Color Grade I
Clarity Grade VVS 1
Cut Grade VERY GOOD
Depth 65.1%
Table 58%
Girdle Slightly Thick To Thick (Faceted)
Culet Pointed
Polish EXCELLENT
Symmetry VERY GOOD
Fluorescence NONE
Inscription(s) IGI 617463821

