



**INTERNATIONAL  
GEMOLOGICAL  
INSTITUTE**

615385252

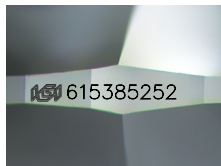


January 13, 2024  
IGI Report Number 615385252  
NATURAL DIAMOND  
ROUND BRILLIANT  
5.23 - 5.27 x 3.30 mm  
Carat Weight 0.56 CARAT  
Color Grade I  
Clarity Grade VS 2  
Cut Grade EXCELLENT  
Polish EXCELLENT  
Symmetry EXCELLENT  
Fluorescence STRONG  
Inscription(s) IGI 615385252

**DIAMOND REPORT**

**ELECTRONIC COPY**

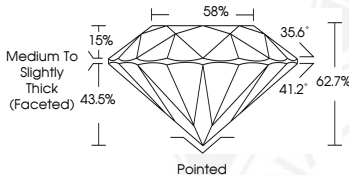
January 13, 2024  
IGI Report Number 615385252  
Description NATURAL DIAMOND  
Shape and Cutting Style ROUND BRILLIANT  
Measurements 5.23 - 5.27 x 3.30 mm



Sample Image Used

**GRADING RESULTS**

Carat Weight 0.56 CARAT  
Color Grade I  
Clarity Grade VS 2  
Cut Grade EXCELLENT



**ADDITIONAL GRADING INFORMATION**

Polish EXCELLENT  
Symmetry EXCELLENT  
Fluorescence STRONG

Identification Features CRYSTAL, CLOUD  
Inscription(s) IGI 615385252



January 13, 2024  
IGI Report Number 615385252  
NATURAL DIAMOND  
ROUND BRILLIANT  
5.23 - 5.27 x 3.30 mm  
Carat Weight 0.56 CARAT  
Color Grade I  
Clarity Grade VS 2  
Cut Grade EXCELLENT  
Polish EXCELLENT  
Symmetry EXCELLENT  
Fluorescence STRONG  
Inscription(s) IGI 615385252

**COLOR**

D - F	G - J	K - M	N - R	S - Z	FANCY
Colorless	Near Colorless	Slightly Tinted	Very Light Color	Light Color	

**CLARITY**

IF	VS <sup>1-2</sup>	VS <sup>1-2</sup>	SI <sup>1-2</sup>	I <sup>1-2</sup>
Internally Flawless	Very Very Slightly Included	Very Slightly Included	Slightly Included	Included

© IGI 2020, International Gemological Institute FD - 10 20



THIS DOCUMENT WAS PRODUCED WITH THE FOLLOWING SECURITY MEASURES: SPECIAL DOCUMENT PAPER, INK SCREENS, WATERMARK, BACKGROUND DESIGN, HOLOGRAM AND OTHER SECURITY FEATURES NOT LISTED AND DO EXCEED DOCUMENT SECURITY INDUSTRY GUIDELINES.