



**INTERNATIONAL  
GEMOLOGICAL  
INSTITUTE**

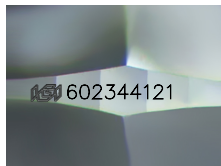
602344121



October 12, 2023  
IGI Report Number 602344121  
NATURAL DIAMOND  
ROUND BRILLIANT  
4.45 - 4.49 x 2.79 mm  
Carat Weight 0.34 CARAT  
Color Grade J  
Clarity Grade INTERNALLY  
FLAWLESS  
Cut Grade EXCELLENT  
Polish EXCELLENT  
Symmetry EXCELLENT  
Fluorescence NONE  
Inscription(s) IGI 602344121  
Comments: IDEAL CUT ROUND  
BRILLIANT

**DIAMOND REPORT**

**ELECTRONIC COPY**



Sample Image Used

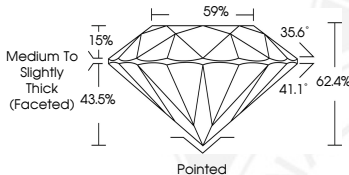
October 12, 2023  
IGI Report Number 602344121  
Description NATURAL DIAMOND  
Shape and Cutting Style ROUND BRILLIANT  
Measurements 4.45 - 4.49 x 2.79 mm

**GRADING RESULTS**

Carat Weight 0.34 CARAT  
Color Grade J  
Clarity Grade INTERNALLY FLAWLESS  
Cut Grade EXCELLENT

**ADDITIONAL GRADING INFORMATION**

Polish EXCELLENT  
Symmetry EXCELLENT  
Fluorescence NONE  
Inscription(s) IGI 602344121  
Comments: IDEAL CUT ROUND BRILLIANT



**COLOR**

D - F	G - J	K - M	N - R	S - Z	FANCY
Colorless	Near Colorless	Slightly Tinted	Very Light Color	Light Color	

**CLARITY**

IF	VS <sup>1-2</sup>	VS <sup>1-2</sup>	SI <sup>1-2</sup>	I <sup>1-2</sup>
Internally Flawless	Very Very Slightly Included	Very Slightly Included	Slightly Included	Included

© IGI 2020, International Gemological Institute FD - 10 20



October 12, 2023  
IGI Report Number 602344121  
NATURAL DIAMOND  
ROUND BRILLIANT  
4.45 - 4.49 x 2.79 mm  
Carat Weight 0.34 CARAT  
Color Grade J  
Clarity Grade INTERNALLY  
FLAWLESS  
Cut Grade EXCELLENT  
Polish EXCELLENT  
Symmetry EXCELLENT  
Fluorescence NONE  
Inscription(s) IGI 602344121  
Comments: IDEAL CUT ROUND  
BRILLIANT



THIS DOCUMENT WAS PRODUCED WITH THE FOLLOWING SECURITY MEASURES: SPECIAL DOCUMENT PAPER, INK SCREENS, WATERMARK, BACKGROUND DESIGN, HOLOGRAM AND OTHER SECURITY FEATURES NOT LISTED AND DO EXCEED DOCUMENT SECURITY INDUSTRY GUIDELINES.