



**INTERNATIONAL
GEMOLOGICAL
INSTITUTE**

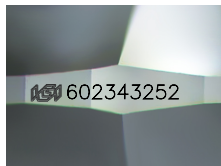
602343252



October 6, 2023
IGI Report Number 602343252
NATURAL DIAMOND
ROUND BRILLIANT
5.00 - 5.06 x 3.18 mm
Carat Weight 0.50 CARAT
Color Grade Q-R
Clarity Grade VS 2
Cut Grade EXCELLENT
Polish EXCELLENT
Symmetry EXCELLENT
Fluorescence SLIGHT
Inscription(s) IGI 602343252

DIAMOND REPORT

ELECTRONIC COPY



Sample Image Used

October 6, 2023
IGI Report Number 602343252
Description NATURAL DIAMOND
Shape and Cutting Style ROUND BRILLIANT
Measurements 5.00 - 5.06 x 3.18 mm

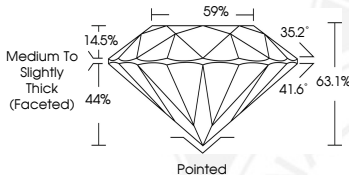
GRADING RESULTS

Carat Weight 0.50 CARAT
Color Grade Q-R
Clarity Grade VS 2
Cut Grade EXCELLENT

ADDITIONAL GRADING INFORMATION

Polish EXCELLENT
Symmetry EXCELLENT
Fluorescence SLIGHT

Identification Features CRYSTAL FEATHER
Inscription(s) IGI 602343252



COLOR

D - F	G - J	K - M	N - R	S - Z	FANCY
Colorless	Near Colorless	Slightly Tinted	Very Light Color	Light Color	

CLARITY

IF	VS ¹⁻²	VS ¹⁻²	SI ¹⁻²	I ¹⁻²
Internally Flawless	Very Very Slightly Included	Very Slightly Included	Slightly Included	Included

© IGI 2020, International Gemological Institute FD - 10 20



October 6, 2023
IGI Report Number 602343252
NATURAL DIAMOND
ROUND BRILLIANT
5.00 - 5.06 x 3.18 mm
Carat Weight 0.50 CARAT
Color Grade Q-R
Clarity Grade VS 2
Cut Grade EXCELLENT
Polish EXCELLENT
Symmetry EXCELLENT
Fluorescence SLIGHT
Inscription(s) IGI 602343252



THIS DOCUMENT WAS PRODUCED WITH THE FOLLOWING SECURITY MEASURES: SPECIAL DOCUMENT PAPER, INK SCREENS, WATERMARK, BACKGROUND DESIGN, HOLOGRAM AND OTHER SECURITY FEATURES NOT LISTED AND DO EXCEED DOCUMENT SECURITY INDUSTRY GUIDELINES.